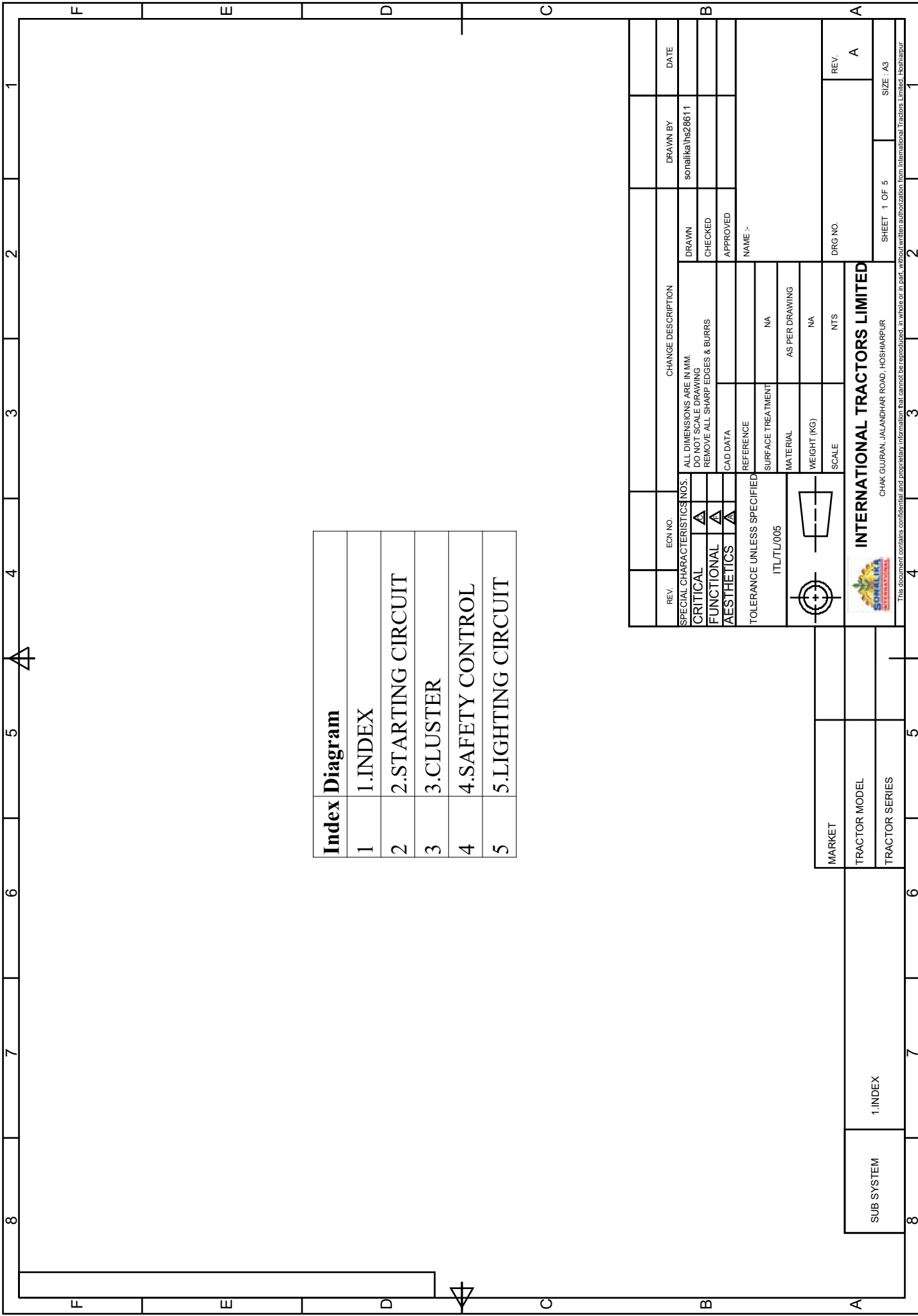




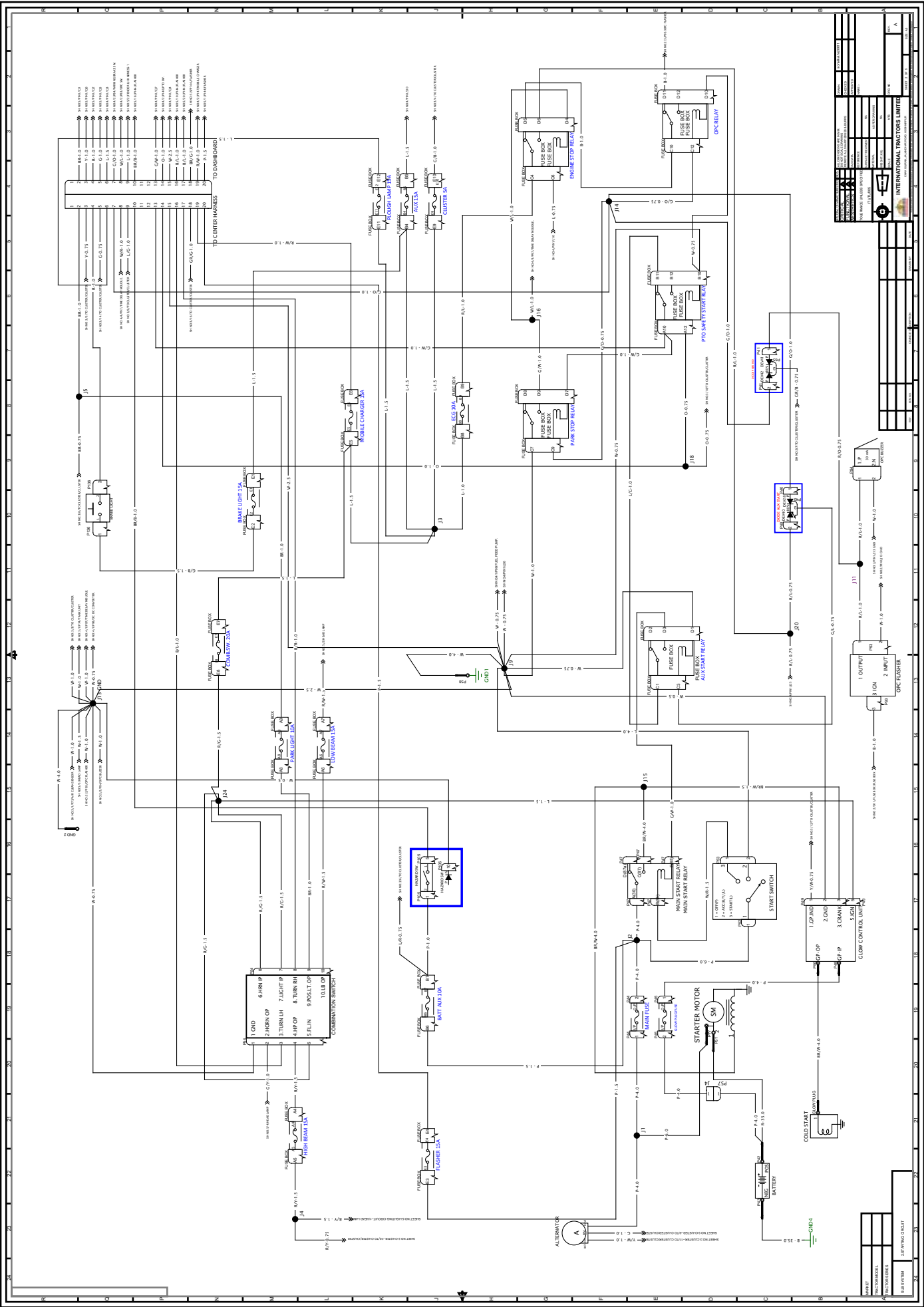
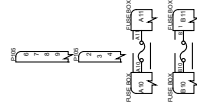
SERVICE MANUAL

S24 (9+9) SHUTTLE XL
Electrical Schematic Diagram



Index Diagram	
1	1.INDEX
2	2.STARTING CIRCUIT
3	3.CLUSTER
4	4.SAFETY CONTROL
5	5.LIGHTING CIRCUIT

REV.	ECN NO.	CHANGE DESCRIPTION	DRAWN BY	DATE
			sonalika1tz28611	
SPECIAL CHARACTERISTICS NOS.		ALL DIMENSIONS ARE IN MM. DO NOT SCALE DRAWING	DRAWN	
CRITICAL	▲	REMOVE ALL SHARP EDGES & BURRS	CHECKED	
FUNCTIONAL	▲		APPROVED	
AESTHETICS	▲	CAD DATA	NAME :	
TOLERANCE UNLESS SPECIFIED		REFERENCE		
ITL/TL/005		SURFACE TREATMENT	NA	
		MATERIAL	AS PER DRAWING	
		WEIGHT (KG)	NA	
		SCALE	NTS	
			DRG NO.	REV. A
MARKET		INTERNATIONAL TRACTORS LIMITED		
TRACTOR MODEL		CHAK GURAN, JALANDHAR ROAD, HOSHIARPUR		
TRACTOR SERIES		SHEET 1 OF 5 SIZE : A3		
SUB SYSTEM		This document contains confidential and proprietary information that cannot be reproduced, in whole or in part, without written authorization from International Tractors Limited, Hoshiarpur.		



WIRE NO.	WIRE COLOR	WIRE SIZE	WIRE FUNCTION
1	W-1.0	1.0	MAIN POWER
2	W-0.75	0.75	IGNITION
3	W-0.5	0.5	GROUND
4	W-0.75	0.75	STARTER MOTOR
5	W-0.75	0.75	STARTER MOTOR
6	W-0.75	0.75	STARTER MOTOR
7	W-0.75	0.75	STARTER MOTOR
8	W-0.75	0.75	STARTER MOTOR
9	W-0.75	0.75	STARTER MOTOR
10	W-0.75	0.75	STARTER MOTOR
11	W-0.75	0.75	STARTER MOTOR
12	W-0.75	0.75	STARTER MOTOR
13	W-0.75	0.75	STARTER MOTOR
14	W-0.75	0.75	STARTER MOTOR
15	W-0.75	0.75	STARTER MOTOR
16	W-0.75	0.75	STARTER MOTOR
17	W-0.75	0.75	STARTER MOTOR
18	W-0.75	0.75	STARTER MOTOR
19	W-0.75	0.75	STARTER MOTOR
20	W-0.75	0.75	STARTER MOTOR
21	W-0.75	0.75	STARTER MOTOR
22	W-0.75	0.75	STARTER MOTOR
23	W-0.75	0.75	STARTER MOTOR
24	W-0.75	0.75	STARTER MOTOR
25	W-0.75	0.75	STARTER MOTOR
26	W-0.75	0.75	STARTER MOTOR
27	W-0.75	0.75	STARTER MOTOR
28	W-0.75	0.75	STARTER MOTOR
29	W-0.75	0.75	STARTER MOTOR
30	W-0.75	0.75	STARTER MOTOR

WIRE NO.	WIRE COLOR	WIRE SIZE	WIRE FUNCTION
31	W-0.75	0.75	STARTER MOTOR
32	W-0.75	0.75	STARTER MOTOR
33	W-0.75	0.75	STARTER MOTOR
34	W-0.75	0.75	STARTER MOTOR
35	W-0.75	0.75	STARTER MOTOR
36	W-0.75	0.75	STARTER MOTOR
37	W-0.75	0.75	STARTER MOTOR
38	W-0.75	0.75	STARTER MOTOR
39	W-0.75	0.75	STARTER MOTOR
40	W-0.75	0.75	STARTER MOTOR
41	W-0.75	0.75	STARTER MOTOR
42	W-0.75	0.75	STARTER MOTOR
43	W-0.75	0.75	STARTER MOTOR
44	W-0.75	0.75	STARTER MOTOR
45	W-0.75	0.75	STARTER MOTOR
46	W-0.75	0.75	STARTER MOTOR
47	W-0.75	0.75	STARTER MOTOR
48	W-0.75	0.75	STARTER MOTOR
49	W-0.75	0.75	STARTER MOTOR
50	W-0.75	0.75	STARTER MOTOR

WIRE NO.	WIRE COLOR	WIRE SIZE	WIRE FUNCTION
51	W-0.75	0.75	STARTER MOTOR
52	W-0.75	0.75	STARTER MOTOR
53	W-0.75	0.75	STARTER MOTOR
54	W-0.75	0.75	STARTER MOTOR
55	W-0.75	0.75	STARTER MOTOR
56	W-0.75	0.75	STARTER MOTOR
57	W-0.75	0.75	STARTER MOTOR
58	W-0.75	0.75	STARTER MOTOR
59	W-0.75	0.75	STARTER MOTOR
60	W-0.75	0.75	STARTER MOTOR
61	W-0.75	0.75	STARTER MOTOR
62	W-0.75	0.75	STARTER MOTOR
63	W-0.75	0.75	STARTER MOTOR
64	W-0.75	0.75	STARTER MOTOR
65	W-0.75	0.75	STARTER MOTOR
66	W-0.75	0.75	STARTER MOTOR
67	W-0.75	0.75	STARTER MOTOR
68	W-0.75	0.75	STARTER MOTOR
69	W-0.75	0.75	STARTER MOTOR
70	W-0.75	0.75	STARTER MOTOR

WIRE NO.	WIRE COLOR	WIRE SIZE	WIRE FUNCTION
71	W-0.75	0.75	STARTER MOTOR
72	W-0.75	0.75	STARTER MOTOR
73	W-0.75	0.75	STARTER MOTOR
74	W-0.75	0.75	STARTER MOTOR
75	W-0.75	0.75	STARTER MOTOR
76	W-0.75	0.75	STARTER MOTOR
77	W-0.75	0.75	STARTER MOTOR
78	W-0.75	0.75	STARTER MOTOR
79	W-0.75	0.75	STARTER MOTOR
80	W-0.75	0.75	STARTER MOTOR
81	W-0.75	0.75	STARTER MOTOR
82	W-0.75	0.75	STARTER MOTOR
83	W-0.75	0.75	STARTER MOTOR
84	W-0.75	0.75	STARTER MOTOR
85	W-0.75	0.75	STARTER MOTOR
86	W-0.75	0.75	STARTER MOTOR
87	W-0.75	0.75	STARTER MOTOR
88	W-0.75	0.75	STARTER MOTOR
89	W-0.75	0.75	STARTER MOTOR
90	W-0.75	0.75	STARTER MOTOR

WIRE NO.	WIRE COLOR	WIRE SIZE	WIRE FUNCTION
91	W-0.75	0.75	STARTER MOTOR
92	W-0.75	0.75	STARTER MOTOR
93	W-0.75	0.75	STARTER MOTOR
94	W-0.75	0.75	STARTER MOTOR
95	W-0.75	0.75	STARTER MOTOR
96	W-0.75	0.75	STARTER MOTOR
97	W-0.75	0.75	STARTER MOTOR
98	W-0.75	0.75	STARTER MOTOR
99	W-0.75	0.75	STARTER MOTOR
100	W-0.75	0.75	STARTER MOTOR
101	W-0.75	0.75	STARTER MOTOR
102	W-0.75	0.75	STARTER MOTOR
103	W-0.75	0.75	STARTER MOTOR
104	W-0.75	0.75	STARTER MOTOR
105	W-0.75	0.75	STARTER MOTOR
106	W-0.75	0.75	STARTER MOTOR
107	W-0.75	0.75	STARTER MOTOR
108	W-0.75	0.75	STARTER MOTOR
109	W-0.75	0.75	STARTER MOTOR
110	W-0.75	0.75	STARTER MOTOR

WIRE NO.	WIRE COLOR	WIRE SIZE	WIRE FUNCTION
111	W-0.75	0.75	STARTER MOTOR
112	W-0.75	0.75	STARTER MOTOR
113	W-0.75	0.75	STARTER MOTOR
114	W-0.75	0.75	STARTER MOTOR
115	W-0.75	0.75	STARTER MOTOR
116	W-0.75	0.75	STARTER MOTOR
117	W-0.75	0.75	STARTER MOTOR
118	W-0.75	0.75	STARTER MOTOR
119	W-0.75	0.75	STARTER MOTOR
120	W-0.75	0.75	STARTER MOTOR
121	W-0.75	0.75	STARTER MOTOR
122	W-0.75	0.75	STARTER MOTOR
123	W-0.75	0.75	STARTER MOTOR
124	W-0.75	0.75	STARTER MOTOR
125	W-0.75	0.75	STARTER MOTOR
126	W-0.75	0.75	STARTER MOTOR
127	W-0.75	0.75	STARTER MOTOR
128	W-0.75	0.75	STARTER MOTOR
129	W-0.75	0.75	STARTER MOTOR
130	W-0.75	0.75	STARTER MOTOR

INTERNATIONAL HARVESTER LIMITED

1000 WEST 10TH AVENUE, MILWAUKEE, WISCONSIN, U.S.A.

1955 1/2 P. 1000

WIRING DIAGRAM

1. WIRE NO. 2. WIRE COLOR 3. WIRE SIZE 4. WIRE FUNCTION

TERMINAL IDENTIFICATION

1. 2. 3. 4. 5. 6. 7. 8. 9. 10. 11. 12. 13. 14. 15. 16. 17. 18. 19. 20. 21. 22. 23. 24. 25. 26. 27. 28. 29. 30.

